

Strengthening Community



*“Our power is in our stories,
our connections, and our communities.”*

- Alice Wong

A Year of Strengthening Community: *What's Inside*

- 2. **Message from Paul Medeiros**
- 3. **Shelley** | Assistive Technology Regional Center
- 4. **Patrick** | Job Development & Placement Services
- 5. **Alex** | Pre-Employment Transition Services (Pre-ETS)
- 6. **Tate** | Therapeutic Services: Physical Therapy Using Hippotherapy
- 7. **Sylvie** | College Navigator Program
- 8. **Manny** | Alternative Finance Program
& Assistive Technology Career Services



9-12. Program Impact & 2025 Photos

- 13. **The Bridge Center**
- 14. **Alternative Finance Program & Empowerment Celebration**
- 15. **Donor Recognition**
- 16. **The Giving Leaf & ESMART Services**
- 17. **Financials & ADA 35th Anniversary**
- 18. **Board Members & Mission Partners**



Where Connection Creates Community

Celebrating the people, partnerships, and progress shaping our mission.

2025 reminded us that strengthening community begins with connection and care. While the country faced many challenges, our work at Easterseals Massachusetts continued to bring people together across every social, political, and racial group. People with disabilities live in every corner of the state, and our programs reach individuals of all ages, which is why the theme of our 2025 Annual Report is Strengthening Community.

Our services meet people where they are. Therapists and pre-employment specialists go into schools to help students build skills for independence and future employment. Assistive technology specialists visit homes to help people live safely and confidently. College navigators support students on dozens of campuses, helping them gain independence and improve career prospects. ESMART Services strengthens other nonprofits so they can continue their missions. And at The Bridge Center, we have built a space where people can make friends, learn new skills, and access the support they need.

2025 brought many moments to celebrate and reflect. We marked the 20th Anniversary of the Alternative Finance Program, hosted community events such as Trunk or Treat, the Youth Fishing Derby, and a blood drive, and celebrated the 35th Anniversary of the ADA statewide and in Washington, DC. We also mourned the passing of

disability civil rights leaders Alice Wong, Bill Allen, and Bob Kafka, whose legacies remind us that building community takes all of us.

Our mission thrives because of our dedicated staff, volunteers, and donors. Whether you joined us for a day at The Bridge Center or have offered decades of leadership on our Board, your time, expertise, and generosity make a real difference in the lives of those we serve.

I am proud to have been part of the Easterseals Massachusetts community for over 20 years. Together, we have achieved so much, and with your continued support, we will keep creating opportunities for people with disabilities to live, learn, work, and play. Thank you for being part of this community and sharing in our mission.

Gratefully Yours,

Paul Medeiros
President & CEO



Shelley

Assistive Technology Regional Center

When Shelley received her ALS diagnosis, she immediately began searching for tools that could help her maintain her daily routines and her sense of independence. ALS has significantly affected her arms and hands, leaving them with very limited functionality. Tasks many people complete without thinking, such as dressing, preparing meals, feeding themselves, or even lifting their arms to type, require tremendous effort for Shelley. Voice control has become essential for computer use, and she relies on her feet to move items around her home. Through all of this, she has remained determined to stay active, travel, and participate fully in her community.

MassAbility's Assistive Technology Regional Centers (ATRC), hosted by Easterseals Massachusetts, serve residents across the state through device

demonstrations and an extensive lending library of thousands of assistive technology tools. Individuals can explore, test, and borrow equipment for 30 days at no cost, gaining access to solutions that enhance communication, learning, mobility, and daily living.

Shelley learned from her occupational therapist that a robotic feeder might help her regain a key part of her daily life. When the manufacturer mentioned that Easterseals Massachusetts could provide a short-term loan, she connected with Sarah, ATRC Program Manager. Through this collaboration, Shelley was able to borrow an Obi self-feeding device.

"It has truly been a game changer," Shelley shared. "Meals are enjoyable again. You have no idea how much better it is to eat with the Obi than trying to feed myself or having someone feed me."

Learning to use the device took a few attempts, and once she mastered it, Shelley discovered a new level of freedom. A caregiver helps prepare food in small pieces that Obi can manage, and from there, Shelley takes the lead. She now enjoys meals at home, at restaurants, and even while traveling. She has taken Obi to dinners with friends, to advocacy events, and on an extended trip that included New York City, Nashville, Alabama, Mississippi, and New Orleans. Throughout her journey, she shared meals and conversations with her daughters without needing constant assistance. The device also halted her weight loss, which brought her tremendous relief.

Shelley continues to look ahead with optimism. She is in the process of ordering her own Obi, reflecting how central the device has become in her daily routine. She hopes for future technologies that will help her dress independently, especially after using the bathroom, so she can keep attending conferences and public events with greater ease. She also remains deeply committed to her professional goals and is passionate about working with others to help the government function more effectively through policy implementation.

Her gratitude for the program and Sarah's guidance shines through every message she sends. "Thanks so much for lending this. It has dramatically improved the quality of my life," she wrote.



Patrick

Job Development & Placement Services

Patrick is a college graduate, a dedicated worker, and someone who knows his strengths. As a person with Autism, he understood that fast-paced workplaces could become overwhelming, especially when tasks involved many steps at once. What he wanted was a job where his attention to detail and focus could shine in a calm, structured environment. Through a referral from MassAbility, Patrick came to Easterseals Massachusetts hoping to find the right opportunity that matched his skills, interests, and work style.

Patrick was paired with Tammy, a Job Development and Placement Specialist, who immediately focused on understanding his work history, patterns, and why past jobs had not been the right fit. Together, they explored what Patrick enjoyed, what he found challenging, and what type of environment would allow him to thrive.

Tammy helped Patrick set realistic vocational goals, strengthen his resume, practice interviewing, and build the confidence he needed to advocate for himself. Patrick shared that Tammy's support was consistent and encouraging from the very beginning.

"Tammy was easy to talk to. She understood my barriers to employment, my past patterns, and really wanted to help me find a realistic outcome," Patrick said.

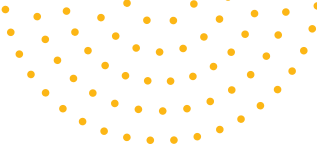
Through mock interviews and coaching, Patrick learned to communicate his strengths more professionally and gained clarity about the type of work that would be sustainable for him in the long term.

In April 2025, Patrick was hired as a Merchandise Associate at a college bookstore. While he was excited about the opportunity, the fast pace of the sales floor quickly became overwhelming. By his second month, Patrick realized he needed a different structure to succeed. Tammy stepped in once again. This time, facilitating a meeting with Patrick and his supervisors to discuss possible adjustments.

Together, they crafted a solution that honored Patrick's abilities and the store's needs. Patrick transitioned to the textbook department, a quieter space where he could focus on data entry, organizing textbook orders, and creating spreadsheets. The change was transformative. His supervisors shared, "He is an integral part of our team, and we are so happy to have him."

Today, Patrick works three days a week in textbooks and occasionally supports merchandising, creating a balanced schedule that aligns with his strengths. He reports feeling more confident, supported, and valued in his role. "My quality of life has improved. I have great co-workers, supervisors, and support at work. I like working in a bookstore. It's consistent and low-pressure."

Patrick continues to pursue his passion for voice-over acting and hopes to work in a library one day. With the right support, a team that believes in him, and a workplace that understands his needs, Patrick has found a job where he can truly thrive.



Alex

Pre-Employment Transition Services (Pre-ETS)

Alex, a student at Tahanto Regional High School in Boylston and a member of the Class of 2026, approaches every challenge with determination and optimism. He was born with a stroke on the right side that resulted in left hemiparesis, creating muscle weakness on the left side of his body. With a strong personal drive, he continues to move forward with energy and enthusiasm. As Alex explains, "Although I have a disability, I don't let that stop me from doing what I know and love."

He first learned about Easterseals Massachusetts' Pre-Employment Transition Services (Pre-ETS) program through his school. The program, funded through MassAbility, serves students with disabilities ages 14–21 across Central Mass., Western Mass., and MetroWest, offering opportunities to explore career interests, build workplace readiness, and prepare for life after high school. Alex connected with Lynn, his Pre-ETS Coordinator, who guided him through activities that helped him understand his strengths and future goals. He completed skills assessments, practiced interview

techniques, and created a resume that highlighted his growing abilities.

During the summer of 2025, Alex began an internship at Nothing Bundt Cakes in Shrewsbury, Massachusetts. He describes the experience as "super productive," and the role quickly became a meaningful part of his routine. "Working gave me a sense of purpose and a better way to use my time this summer than sitting at home and scrolling on my phone," he shares. The internship encouraged him to leave the house each day, meet new people, and take on responsibilities that strengthened his confidence.

Alex assembled specialty cardboard boxes for the bakery's signature cakes, ensured accurate labeling, and supported the team with behind-the-scenes tasks. He enjoyed hearing customers express excitement when they picked up their orders, and he took pride in contributing to those moments. Through consistent practice, he grew more comfortable with teamwork and task management.

One aspect of the program that stood out to Alex was the personal support he received. He appreciated that Easterseals staff took time to understand his goals.

"One of my favorite things about interacting with Easterseals was that they would come to you at your school and that they would take the time and listen to you," he says.

Alex has participated in the Pre-ETS program for four years and hopes to continue as he prepares for life after high school. He is working on securing another internship this summer and looks forward to guidance with job applications, college exploration, and resume updates. With his determination and the support of Easterseals, Alex is building a future filled with purpose and possibility.



Nothing Bundt Cakes has been a dedicated Pre-ETS internship partner with ESMA since 2021, offering hands-on training that has shaped the growth of many students.



Tate with her grandmother Michele.

Tate

Physical Therapy Using Hippotherapy

In June of 2024, at two years old, Tate began hippotherapy at The Bridge Center as part of her Physical Therapy journey. New to the barn, the horses, and the therapy routine, she found her first sessions marked by tears and uncertainty. Even wearing a riding helmet took time to get used to. Tate often arrives at her sessions with her mother or one of her grandmothers by her side, creating a warm, familiar support system as she continues to grow. Over the past year, Tate's journey has become a powerful story of strength, trust, and progress.

Born with Pyruvate Dehydrogenase Complex Deficiency (PDCD), Tate's family was given limited hope about what life might hold for her. Today, her experience at The Bridge Center has helped rewrite that narrative. With the support of her Physical Therapy team and hippotherapy

interventions, Tate has made remarkable gains in strength, balance, and confidence. She now happily participates in 45-minute sessions that incorporate equine movement, working atop Whitney, an experience she looks forward to each week.

Her mother, Carly, describes one of the most meaningful changes as the immediate calm Tate shows upon entering the barn. Fridays have become their favorite day because Tate gets to be on the horse. What was once intimidating has become familiar, joyful, and empowering. Over time, Tate has grown stronger physically and emotionally, showing resilience and comfort in an environment that now feels like home.

A special part of Tate's progress has been her bond with Whitney. From the moment Tate puts on her helmet, she is all smiles, ready to go. One especially heartwarming moment came when Tate and Whitney shared kisses at the end of a session, reflecting the trust and connection they have built together. That nurturing bond has helped make therapy both meaningful and motivating.

Carly credits Paula, Tiffany, Cindy, and the rest of The Bridge Center team for being deeply attuned to Tate's needs, accomplishments, and growth. Their care has made Tate feel like part of a team that genuinely believes in her potential. For Tate and her family, The Bridge Center has offered more than therapy; it has provided encouragement and community.

"We are forever grateful for the staff, students, and volunteers at the Bridge Center for supporting Tate through a new lens," said Carly.

Tate's story exemplifies what is possible when expert care, individualized programs, and trusted equine partners come together to support a child's growth.





Sylvie

College Navigator Program

When Sylvie began her studies at Greenfield Community College, she brought a strong sense of determination to her coursework along with the challenges of a learning disability. Processing information takes her longer, and tasks involving math or reading maps require extra effort. She often needs information to be repeated before it fully clicks, which can lead others to make discouraging assumptions. Since her disability is invisible, these moments can be especially frustrating. Even so, Sylvie has always pushed forward, working hard to get good grades and stay true to her goals.

Her mother, who worked closely with the college, told her about the Easterseals Massachusetts College Navigator Program. The program provides individualized services for college students with disabilities, helping them identify barriers, advocate for their needs, and access campus resources so they can reach graduation with confidence. Sylvie's services

were funded through a grant obtained by Easterseals Massachusetts, allowing her to receive weekly support throughout her time at Greenfield.

When she began working with a College Navigator, Sylvie focused on time management skills, organization, and thorough completion of assignments rather than rushing through them due to anxiety. Weekly meetings created a steady routine. Together, they reviewed upcoming tasks, wrote them down, and identified what she could begin before the next session.

“Every college navigator I’ve had was super patient and willing to give me constructive advice on how to better meet my goals,” she shared.

Over time, Sylvie began to see her own progress. She developed a personal system for tracking assignments and arrived at meetings ready to share what she had already completed. This shift gave her a growing sense of independence. She also received support with the smaller tasks that can feel overwhelming in college, such as replying to emails, ordering textbooks, asking professors for help, and keeping track of essential graduation forms. Each step strengthened her confidence.

In 2025, Sylvie graduated from Greenfield Community College with a degree in Adventure Education. And, she was employed by The Wilderness School in East Hartland, Connecticut, a role she has held for three summers that aligns with her strengths and passions. “The College Navigator program helped me manage my time and prepare me for adult responsibilities. I am proud of myself,” she shared, reflecting on how far she has come. She also expresses sincere thanks to her “superstar” mom for enrolling her in programs like these.

Sylvie’s journey highlights the power of consistent support, strong routines, and the belief that every student deserves the opportunity to thrive.

Sylvie is currently studying film at St. Lawrence University, where she receives tutoring support and has joined two clubs. Grateful for the encouragement she received from her mother and her College Navigator, she shared a lesson that continues to guide her: “Something I learned from the College Navigator Program is that people are not meant to accomplish everything on their own!”





Manny

Alternative Finance Program & Assistive Technology Career Services

Marcelino “Manny” Guerra is a business owner, parent, and advocate whose determination shapes every part of his life. After an accident left him paralyzed from the chest down, Manny rebuilt his life with resilience, independence, and a deep commitment to his family and those around him. Today, he relies on Personal Care Assistants for daily living tasks such as bathing, dressing, transferring, meal preparation, and managing essential medical equipment. Even with these challenges, Manny remains deeply engaged in his community and focused on building a meaningful, independent life.

For Manny, accessible transportation was the key to unlocking that independence. Traditional lenders often do not understand the unique needs of people with disabilities, especially when it comes to financing adaptive equipment or modified vehicles. That is where the Easterseals Massachusetts Alternative Finance Program made all the difference. Its Financial Loan Program provides low-interest loans for assistive technology, including modified vehicles, helping Massachusetts residents with disabilities access the tools they need to live, learn, work, and participate

fully in their communities. Before receiving his loan, Manny had clear goals but limited ways to reach them. He wanted to attend medical appointments reliably, stay active in his community, and pursue his dream of launching a wheelchair-accessible transportation service. Without an adaptive vehicle, these goals remained out of reach.

Through the Alternative Finance Program, Manny was able to purchase a fully converted, wheelchair-accessible van. The program’s flexible, affordable financing structure is designed to reduce barriers for people with disabilities.

Manny said, “This wasn’t just a loan. It was a lifeline. It was someone finally saying, ‘We believe in your goals, and we’re going to help you get there.’”

Manny worked closely with Easterseals staff, including Briana, Alternative Finance Program Coordinator, and Kathie, Assistive Technology Specialist. Through the MassAbility Career Services program, Kathie provided comprehensive assistive technology services, offering expert guidance and ensuring he had the equipment and software required to manage both his daily life and his business.

With his adaptive vehicle, Manny’s world expanded. He gained the ability to travel independently, participate in community events, and reconnect with family. Most importantly, the van became the foundation for his business, Wheels On the Bus Transportation LLC, Worcester County’s first private-pay wheelchair-accessible transportation service created by someone who uses a wheelchair. Manny now provides safe, respectful transportation to others with disabilities, offering connection, dignity, and encouragement. “Every ride is a reminder of how far I’ve come and how far others can go when someone believes in them,” he said.

Today, Manny continues to grow his business, strengthen community partnerships, and inspire others through advocacy and mentorship. His long-term goals include expanding his fleet, creating job opportunities for people with disabilities, and building programs that support youth and adults navigating similar challenges.

The Alternative Finance Program did more than help Manny purchase a vehicle; it helped him build a future filled with purpose, independence, and impact.



Assistive Technology

Assistive Technology (AT) provides statewide services for people with disabilities to expand their independence by **using devices to achieve greater access to education, employment, and communities.**

3,841
total clients served during more than 11,700 appointments.

863
devices loaned between the Boston and Worcester MassAbility Assistive Technology Regional Centers.

646
Massachusetts Department of Developmental Services clients served.

464
MassAbility clients served through Career Services and Independent Living Programs.

203
MassAbility clients assisted with laptops and support sessions by our Technical Support Center.

New!
Began providing AT services to the Rhode Island DHS Office of Rehabilitation Services.

Advocacy & Community

ESMA provides **22,000 essential services to more than 10,000 individuals each year.** We actively engage in advocacy by encouraging state legislators to support programs that empower people with disabilities to gain greater independence. We keep the public informed through our website and social media channels, ensuring that our community stays connected to our work and impact.

14,285
social media followers across 7 channels, and 1,165 members in our 3 Facebook groups, as of December 2025.

375
people employed by ESMA during 2025, including temporary summer workers.

250
legislative meetings, roundtables, and public hearings were attended and many were coordinated by our Advocacy Team.

80+
years providing services that unlock everyone's full potential.

55
community resource fairs were attended by ESMA staff, raising awareness about our programs to thousands across Massachusetts.

August 26
our new eastersealsma.org website went live! The homepage, The Bridge Center, and Careers were the top 3 pages visited in 2025.



Huge spike of gratitude to the six teams who brought their A-game to the Easterseals Annual Volleyball Event in April, raising more than \$3,700.



ESMA hosted the 6th Northeast AAC (Augmentative and Alternative Communication) Summit in Worcester. ESMA's AAC Team presented "Partners in Communication: Strategies for Engaging and Empowering Families and Care Teams."



ESMA Advocacy Teams work year-round to advance important disability issues. Thanks to all who respond to our Advocacy Alerts to contact legislators to help grow our mission. Advocacy requires many voices!

Pappas Rehabilitation Hospital for Children & Student Service Aides

ESMA collaborates with Pappas Rehabilitation Hospital for Children and various school districts to **provide staffing solutions for recreational, programming, and paraprofessional support needs.**

40
patients were provided care.

23
school districts partnered with ESMA to provide students with 1-to-1 support during school.

Youth & Recreation

Statewide Youth Leadership, Mentoring, Recreation Programs, and the #TeachDisabilityHistory campaign offer youth and young adults **opportunities for self-advocacy, self-awareness, personal health, safety, and growth.**

382
participants across all statewide Youth & Recreation Programs.

244
youth and young adults participated in the Youth Leadership Network throughout the state.

80
people engaged in summer and year-round Swim Programs.

45
members of Brother Against Discrimination and Thrive Mentoring Programs.

27
individuals attended Accessible Martial Arts classes online, in-person, or at The Boston Home.

15
kids enjoyed Camp Sno-Mo overnight camp in New Hampshire.

21
young adults meet regularly to support the #TeachDisabilityHistory campaign.



We were honored to receive a \$50,000 donation from **The Hoyt Foundation** at our Move With Me celebration.



What a home run for a great cause! Thank you to the six teams that participated in our **Annual Softball Event** in August. Together, they raised over \$5,000.



Zampell Companies 7th Annual Cornhole and Cookout supported ESMA programs, raising nearly \$4,000.

See the story on page 14.

College Navigator

The College Navigator Program provides individualized services to college students with disabilities to help reach their educational and employment goals.

450+

students in Massachusetts received services in 2025, totaling 22,500 hours of 1-to-1 support.

135

students benefited from grant funding at five state community colleges.

90%

of our students stay enrolled in college; of those, 100% reach their goals.

31

students graduated in 2025!

Employment & Transition Services

Employment & Transition Services provide skills training and ongoing support to adults with disabilities to secure competitive jobs and assist students to reach personal growth goals and develop skills to navigate educational, community, and career settings.

285

students ages 14-21 participated in Pre-Employment Transition Services (Pre-ETS) to gain valuable employment and transition skills toward adulthood.

215

MassAbility clients supported by Job Development & Placement Services.

56

MassAbility clients achieved their goals by obtaining jobs.

Massachusetts Alternative Finance Program

The Massachusetts Alternative Finance Program improves the independence and quality of life of residents with disabilities through loan opportunities for acquiring Assistive Technology devices and services.

\$20+ Million

total loaned since the program started in 2005.

\$246,860

no-interest Mini Loans to purchase AT items less than \$4,000, such as hearing aids, since 2018.

1,475

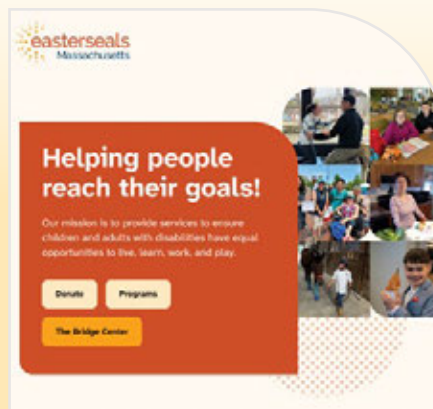
Long-Term Device Loans since 2009.

971

low-interest Financial Loans to purchase AT devices over \$4,000, primarily modified vehicles, since 2005.



The Easterseals Massachusetts 2025 Bridge to Opportunities Golf Classic at Olde Scotland Links was a hole-in-one for disability programs, raising more than \$121,000.



In August, we were excited to launch our new Website, after a 2+ year project with National Easterseals and affiliates across the country, with improved navigation and a fresh design for a smoother user experience.



We are grateful to Jim Cantwell and 60+ Teammates who celebrated the 40th anniversary of their first "marathon" 37-inning fundraising softball game in 1985. This year's fundraiser added to their lifetime total, bringing it to nearly \$80,000.

Rehabilitation Services & Applied Behavior Analysis

ESMA partners with various community programs and provides services to **help clients achieve greater independence.**

135

community partners, including schools, day habilitation programs, skilled nursing facilities, and early intervention agencies, received services in 2025.

80

therapists provided more than 53,000 hours of Physical Therapy, Occupational Therapy, Speech and Language Pathology, and Applied Behavior Analysis.

The Bridge Center

The Bridge Center provides a wide range of programs year-round, including **Recreation, Equine Assisted Services, Therapeutic Services, and Camp**, for all ages and all abilities.

2,478

people attended programs, services, events, and field trips.

437.5

hours of PT, OT, and SLP services were provided throughout the campus.

167

individuals engaged in programming at the Equestrian Center.

79

volunteers provided 4,272 hours of service, which helped facilitate all programs, events, and ground maintenance.

63

employees across 3 companies volunteered during TeamWork Days to complete dozens of grounds and facilities projects.

42

campers enjoyed school vacation camp programs.

24

ongoing Recreation programs were provided to 63 participants.



CVS held their day-long team retreat at The Bridge Center, where they volunteered to clear a walking trail and organize the barn and program supplies during a TeamWork Day.



An enthusiastic group of Microsoft employees put together backpacks filled with supplies for our College Navigator students during October's National Disability Employment Month.



In November, we kicked off our new Friends of the Barn Animal Sponsorship Program with an event where attendees mingled with their favorite animals for interactive painting, and more.



The Bridge Center: Building Strength Through Connection

A year of growth, joy, and community spirit.

In 2025, The Bridge Center celebrated a year filled with restoration, progress, and meaningful connections. As our campus continued its transformation, our programs flourished, and the spirit of our community grew stronger than ever. Each new initiative brought participants, families, caregivers, partners, and staff together in ways that enriched every corner of our work.

Across the Equestrian Center, Recreation, Therapeutic Services, and Camp departments, program development reached new heights. Pony Playgroups welcomed young riders and their families into the world of equine-assisted learning. Therapy Vacation Camp offered engaging therapeutic experiences during school breaks. Wellness Groups expanded to support creativity, movement, and skill-building.

Community engagement remained a vibrant part of our focus. We partnered with the Cranberry Chamber of Commerce to host a blood drive and joined the Bridgewater Lions Club during our Annual Fishing Derby, which also featured an electronics recycling drive. Our third annual Trunk or Treat drew 1,500 attendees, making it our most popular community celebration of the year.

Collaboration continued to broaden our reach. In 2025, we partnered with six schools, six day habilitation programs, two state agencies, eleven community organizations, and three universities. Acumen approval further expanded access to Physical Therapy, Occupational Therapy, and Speech and Language Pathology for individuals using self-directed services through the Department of Developmental Services.

Looking ahead, we remain dedicated to creating spaces where individuals of all abilities can grow, express themselves, and shape their own experiences. Our strength lies in the families who trust us, the partners who work alongside us, the donors and volunteers who support our mission, and the participants whose achievements inspire us every day.

In 2025, we strengthened relationships, deepened connections, and nurtured a true sense of belonging. Together, we continue building a future at The Bridge Center that is welcoming, supportive, and full of possibility for everyone.



Alternative Finance Program: 20 Years of Expanding Access and Opportunity



Celebrating two decades of empowering independence through Assistive Technology loans.

On November 5, Easterseals Massachusetts, MassAbility, and Beacon Bank (formerly known as Berkshire Bank) celebrated the 20th Anniversary of the Massachusetts Alternative Finance Program (AFP) at the Massachusetts State House. We extend our thanks to Senator Robyn Kennedy, Worcester 1st District, our Legislative Event Sponsor, and to Norwood Hearing Center, our Community Sponsor.

Attendees heard from Steve Higgins, AFP Committee Chair, Senator Robyn Kennedy, Worcester 1st District, Commissioner Toni Wolf, MassAbility, Christopher Kostiw, EVP, Division Head, Commercial Lending at Beacon Bank, and Paul Medeiros, President & CEO of Easterseals Massachusetts. They highlighted how, for two decades, the AFP has strengthened independence and improved the quality of life for residents with disabilities through affordable loans for assistive technology devices and services.

This milestone reflects 20 years of partnership and progress, \$20 million in loans, and our continued commitment

to expanding access to assistive technology across Massachusetts.

A special thank-you to AFP loan recipients Marcelino and Filomena, who shared their stories and demonstrated the program's life-changing impact.



Empowerment Celebration: Strengthening Community Together

Honoring the people and partnerships that make our mission possible.

The 2025 Empowerment Celebration, held on March 28 at the Microsoft NERD Center in Cambridge, was a great success, raising over \$114,000! While attendees mingled with fellow supporters and had the opportunity to interact with assistive technology devices through hands-on demonstrations, the highlight of the evening was celebrating leaders who positively impact and strengthen the disability community. Their accomplishments help break down barriers, giving everyone equal opportunities to live, learn, work, and play.

Team Hoyt Award: Century 21 Cityside and the Bray Family

Equal Opportunities to Work Award: Collette Divitto, owner of Colletley's Cookies

Empowerment Award: Joey DiRocco, founder of Sparklytes



Scan QR code to visit our Facebook page to view event photos.

Special thanks to our event sponsors: State Street Corporation, Appleton Partners, Inc., Eastern Bank, UniBank, Country Bank, Boston Center for Independent Living, Your Access Advocates (formerly Center for Living & Working), MetroWest Center for Independent Living, Level Up, and Valanzola Law Group.

President's Council *Gifts made between January 1 and December 31, 2025.*

Thank you! Your dedication, confidence, and unwavering support for our mission made the growth and achievements highlighted in this year's report possible. Our vision of a kind world where people with disabilities have equal opportunities to live, learn, work, and play is imaginable because of your continued partnership.

\$1 MILLION & ABOVE The Late George Krikorian

\$50,000
The Late Barbara Cobb
Paul Lavallee
Robert & Dawn Seiple

\$25,000 - \$49,999
Anonymous Parent
Ladd & Tammy Lavallee
Walter Skrobot, Jr.

\$10,000 - \$24,999
Diane Brazelton
Cliff & Carey Cort
Patricia Davidson
Eric & Liz Oddleifson
Albert & Debra O'Neal 🏠
Jay White
The Zagrobski Family

\$5,000 - \$9,999
Joe Bellil & Linda Long-Bellil
Doug & Nancy Bray
Ron Cort
Glenn Cort
Emily Fant 🏠
Mark Goldman
Kirk & Sheila Joslin
Paul & Jennifer Medeiros
Namal Nawana & Susan Tayebati
Miki & Colleen Sandorfi
Michael & Gayle Schumacher
Skip & Nicole Wiemeyer

\$2,500 - \$4,999
Lenny Adelson
Collin Bray
Jack Cort
David Fialkow
Dan Fleischer
John & Linda Freeman
Michael Hayes
George Hildakakis-Hillas
Ken & Carrie Larson
William B. Lawrence III
Bill Oncay
Keith Perry
Christina Petkus
Jim Popkin
Owen & Andrea Richardson
Peter & Michelle Roque
The Late David Rubin
Harry & Debra Salerno

\$1,000 - \$2,499
Anonymous Donor
James Bertone
Tobe Berkovitz & Pauline Hamel 🏠
Jean & the late John Childs
Alison Coady
Peter Black & Christine Cooney 🏠
Becky Curran
Josh Cutler
Raymond & Paula Doherty
Nicholas Fairall 🏠
Diane Foley
Kevin & Cyndi Forcier 🏠
Ivor & Barbara Freeman
James & Teresa Friesema
Marcel Gaudreau
Suzanne Gebelein
Keith Gilbert
Josh Goldman
Scott & Rebecca Gregory
David Grenon
Gloria Guerrero
Michelle Higginson
David & Kathy Hoffman
Russell & Lisa Hoyt
Chris & Kathy Kittle
Christopher Lagan
Cheryl Lazzaro
Jeffrey Leerink
Leslie Leslie
Richard Lynch
Susan Magee
Libby Merrill
Paula McDonald

Joan Morris
Francesca Navarro
Edward Odepius
Barbara Piette
Robert Reisman
Daniel & Anne Sacco
Richard Salerno
Anne Schofield
William Serjak & Betsey Blackmer-Serjak
Eric Smith
PJ & Kimberly Sokol
Christine Thomas
Stephen & Maryjane Walsh
Miles Wright
John Yozell
Nafisa Zafar
Walter Zydlewski

We are grateful for every contribution generously made in support of our mission and have taken great care to ensure the accuracy of our recognition listings. If you notice any errors or omissions, please let us know by emailing by emailing philanthropy@eastersealma.org.

 = Friends of the Barn Sponsor



Please scan to view our full donor recognition listings.

Champions of Equal Opportunities

We are honored and grateful to the corporations, foundations, and organizations listed below for their support of ESMA in 2025. Together, we advanced our mission and strengthened essential programs that empowered children, youth, adults, and seniors with disabilities to pursue and achieve their goals.

\$100,000 & ABOVE
Lloyd G. Balfour Foundation
Bank of America
N.A., Trustee

\$50,000 - \$99,999
Berry Global | Amcor
Coca-Cola Co.
The Hoyt Foundation
MassMutual Foundation

\$25,000 - \$49,999
CVS Health Charitable Foundation

Flora N. Beggs Trust
Oliari Charitable Foundation 🏠
The State Street Foundation

\$10,000 - \$24,999
Adelaide Breed Bayrd Foundation
Berkshire Bank Foundation
Comcast NBCUniversal
Constance O. Putnam Foundation
Copeland Family Foundation
Felicia Rose Grant Program
George F. & Sybil H. Fuller Foundation
The George R. Wallace Foundation
The Hamilton Company Charitable Foundation
Horace A. Moses Charitable Trust, Bank of America, N.A., Trustee
Martignetti Companies
Microsoft Corporation
PricewaterhouseCoopers
Risk Strategies

The Ruth H. and Warren A. Ellsworth Foundation
UKG

\$5,000 - \$9,999
Americo J. Francisco Charity Fund, Estate & Realty/Charitable Trusts at the Boston Foundation
Bayer HealthCare
Building Impact
Claremont Companies
Eastern Bank
George W. Kelley Trust
New England Development
Olde Scotland Links
Paul & Dixon Insurance
R.H. White Companies
Starbucks Foundation
Neighborhood Grants Fund

\$2,500 - \$4,999
AIS | CRE
Anonymous Foundation
Appleton Partners
B-Sure Home Inspection
Deloitte

The Hillis Family Foundation
Oppenheimer & Co.
UniBank
Walmart Foundation

\$1,000 - \$2,499
Boston Center For Independent Living
Country Bank for Savings
Howland Family Foundation
Jackson Healthcare Charities
J. L. Enterprises, Inc.
KKM, LLC
The Ludes Family Foundation
Matthew V. Joslin Fund
Microsoft Corporation
Susan E. Simpson Charitable Foundation
Suzanne Bennett Charitable Foundation
PhRMA Foundation
Valanzola Law Group
Your Access Advocates



Please scan to view our The Giving Leaf recipients each year.

The Giving Leaf: Strengthening Community Through Generosity

Recognizing our donors who continue to grow our mission year after year.

The Giving Leaf is a tribute to individuals who, in every season and every year, resolve to make a difference in our community. Members of The Giving Leaf receive a commemorative milestone leaf pin in honor and recognition of their loyalty, support, and dedication to our mission.

In the fall, we celebrated 45 supporters, including those who reached new milestones and first-time members who earned their five-year Giving Leaf pin. Together, they represent over 355 years of collective support, generously contributing their time, leadership, volunteerism, and financial resources to strengthen our essential programs. Our tree grows because of you. Thank you for helping us flourish!

If you would like more information about The Giving Leaf, please email philanthropy@eastersealsma.org.

LIFETIME GIVER

Archer O'Reilly III

25 YEARS

David Grenon

20 YEARS

Deborah Downey

15 YEARS

Thomas & Nancy Buckingham

10 YEARS

Norman Barrett
Fujiko Clark
David Essensa
Robert Fredette
Paul & Marilyn Gigliotti
Gail Knowles
Leslie Leslie
Jamie McIntyre
Matthew Nucifora
Mark O'Neil

5 YEARS

Patricia Bickford
Noreen Blanchette
Lynn Burke
Lucille Connolly
Jeanne Dee
Justine Black
Madeleine Deschenes
Joseph DiSabato
Barbara Dorazio
Cyndi Forcier
Richard Greenfield
Shirley Gregory
Scott & Rebecca Gregory
Merrilee Guarini
Gloria Guerrero
Bernadette LaCoursiere
Stephen & Krisha Mahoney
Paula McDonald
Elizabeth Merrill
Francesca Navarro
John Prucknicki
Valerie Smithwood-Green

Andrea Stiller
Mary & Tom Weber
Nicole Wiemeyer
Walter Zydlewski

ESMART Services: Supporting the Work Behind the Mission

Providing essential operational support that helps nonprofits thrive.

ESMART Services provides small nonprofits with affordable, high-quality administrative and professional support, helping them strengthen their internal operations and focus more fully on their missions.

After working with several area nonprofits for two years, we officially announced this support program to the wider Central Massachusetts region in 2025. Specifically, the program offers customized expertise in Human Resources, Information Technology, and Finance & Administration, enabling organizations to access experienced professionals without building these functions in-house. By reducing operating expenses and easing back-office burdens, ESMART Services helps nonprofits operate more efficiently, ultimately strengthening our broader community.



Financials As of August 31, 2025

Program Service Revenue	16,029,935
Grants & Contributions	2,839,535
Total Revenue	\$18,869,470
Expenses	17,686,483
Change in Net Assets from Operations	\$1,182,987
Non-Operating Revenue	1,504,388
Change in Net Assets	\$2,687,375
Net Assets at Beginning of Year	22,388,844
Net Assets at End of Fiscal Year	\$25,076,219

ASSETS

Cash	3,042,662
Prog. Fees Receivable, Net Allowance for Doubtful Accounts	696,089
Contributions Receivable	1,050,047
Prepaid Expenses and Other	203,865
Restricted Cash	442,136
Investments	14,733,765
Assets Held for Others	1,532,679
Right-of-Use Lease Assets-Operating	1,447,305
Property and Equipment, Net	7,443,262
Total Assets	\$30,591,810

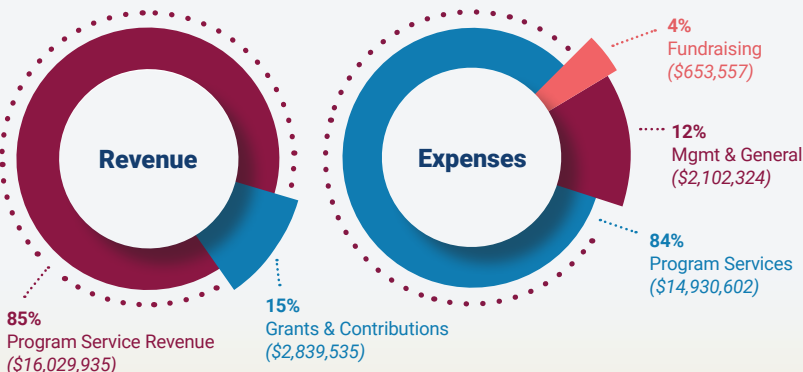
LIABILITIES

Accounts Payable and Accrued Expenses	937,665
Notes Payable	983,230
Operating Lease Liability	1,446,939
Assets Held for Others	2,047,757
Conditional Grant Advance	100,000
Total Liabilities	\$5,515,591

NET ASSETS

Operating	15,917,576
Property and Equipment	6,460,032
Total Without Donor Restriction	22,377,608
With Donor Restriction	2,698,611
Total Net Assets	\$25,076,219

Total Liabilities and Net Assets **\$30,591,810**



Honoring 35 Years of the ADA

Celebrating a milestone that brought communities together and strengthened our shared commitment to disability rights.

In July, ESMA staff took part in Americans with Disabilities Act (ADA) celebrations across **Worcester, Boston, and Washington, DC.**



In **Worcester**, staff hosted an outreach table at Out to Lunch, engaging community members in the #TeachDisabilityHistory campaign and leading a demonstration of our Accessible Martial Arts Program.



In **Boston**, staff and #TeachDisabilityHistory advocates joined a march from City Hall to the Embrace Memorial, which was highlighted by a flag-raising and a proclamation reaffirming the importance of accessibility and disability rights.



In **Washington, DC**, staff and program advocates presented #TeachDisabilityHistory at the National Council on Independent Living Conference and participated in the ADA35 March & Rally at the U.S. Capitol.

State Board

OFFICERS

Collin Bray, Chair
 Scott Gregory, Vice Chair
 Avery Gray, Treasurer
 Rebecca (Becca) Fracassa, Secretary

DIRECTORS

Amanda Berg
 Justine Black
 Jason Cort
 Patricia Davidson
 Brian Franz
 Maureen Goldin
 Gloria Guerrera
 Michelle Higginson
 David Hoffman
 Leslie Leslie
 Maryellen (Mel) MacRae
 Elizabeth (Libby) Merrill
 Danielle Oliari
 William (Bill) Oncay
 Keith Perry
 Cesar Rodrigues
 Harry Salerno
 Olivia Thompson
 Erik Tobias
 Heather Whitney

IMMEDIATE PAST CHAIR

Dawn Seiple

HONORARY LIFE MEMBERS

Alison (Sunny) Coady
 Caroline Larson
 Daniel Sacco
 Walter Zagrobski

HONORARY MEMBERS

Steve Grogan
 In memory of Roy Brazelton
 In memory of Dick Hoyt
 In memory of Rick Hoyt

Credits

WRITERS, EDITORS & CONTRIBUTORS

Cindy Conquest
 Cyndi Forcier
 Desiree Forte
 Tammy King
 Charlene Leith
 Lauren McAuliffe
 Paul Medeiros

Regional Board

BOSTON

Cassie Andrade
 Sally Atwell
 Amanda Boucher
 Jordan Bray
 Jane DiMartino
 Mark Flint
 Vito Honey
 Debbie Hsu
 Fabrice Lamour
 Sam Marchman
 Amanda McMahan
 Leslie Owens
 Daniel Puopolo
 Brynn Thompson
 Mirsini Tzigizis

BRIDGEWATER

Ashley Bedard
 Larissa Chartier
 Tracy Coval
 Josh Del Viscovo
 Mary Lutz
 Gina Nash
 Michelle Peck
 John Pumphrey
 Amy Reichenbach

CENTRAL MASS

Pam Barrett
 Andrew Burgoyne
 Shannon Harvey
 Kristi Mendoza

WESTERN MASS

Elise Legere
 Ashley Nyman
 Kim Watson

Elise Prince
 Patrick Remy
 Kim Sokol
 Gabby Turcotte
 & ESMA Management Team

GRAPHIC DESIGN

Jessica Estrada

2025 Mission Partners

At Easterseals Massachusetts, we believe meaningful change happens when we move forward together. Our Corporate Mission Partners play a vital role in expanding our reach and deepening our impact for people with disabilities across the Commonwealth. Each partnership is thoughtfully tailored to align with our partners' corporate social responsibility goals and employee engagement priorities, connecting their values with our wide range of programs.

This year, we were proud to collaborate with eight Corporate Mission Partners whose commitment helped create opportunities that energized teams, strengthened communities, and transformed lives.





Our **Mission**
 is to provide
 services to ensure
 children and adults
 with disabilities
 have equal
 opportunities to
 live, learn, work,
 and play.

eastersealsma.org



**State Headquarters &
 MassAbility Assistive
 Technology Regional Center**

18 Chestnut Street, Suite 200
 Worcester, MA 01608
 508.757.2756

**Boston Office &
 MassAbility Assistive
 Technology Regional Center**

89 South Street, Suite 102
 Boston, MA 02111
 617.226.2640

**Bridgewater Office &
 The Bridge Center**

470 Pine Street
 Bridgewater, MA 02324
 617.737.6658

